

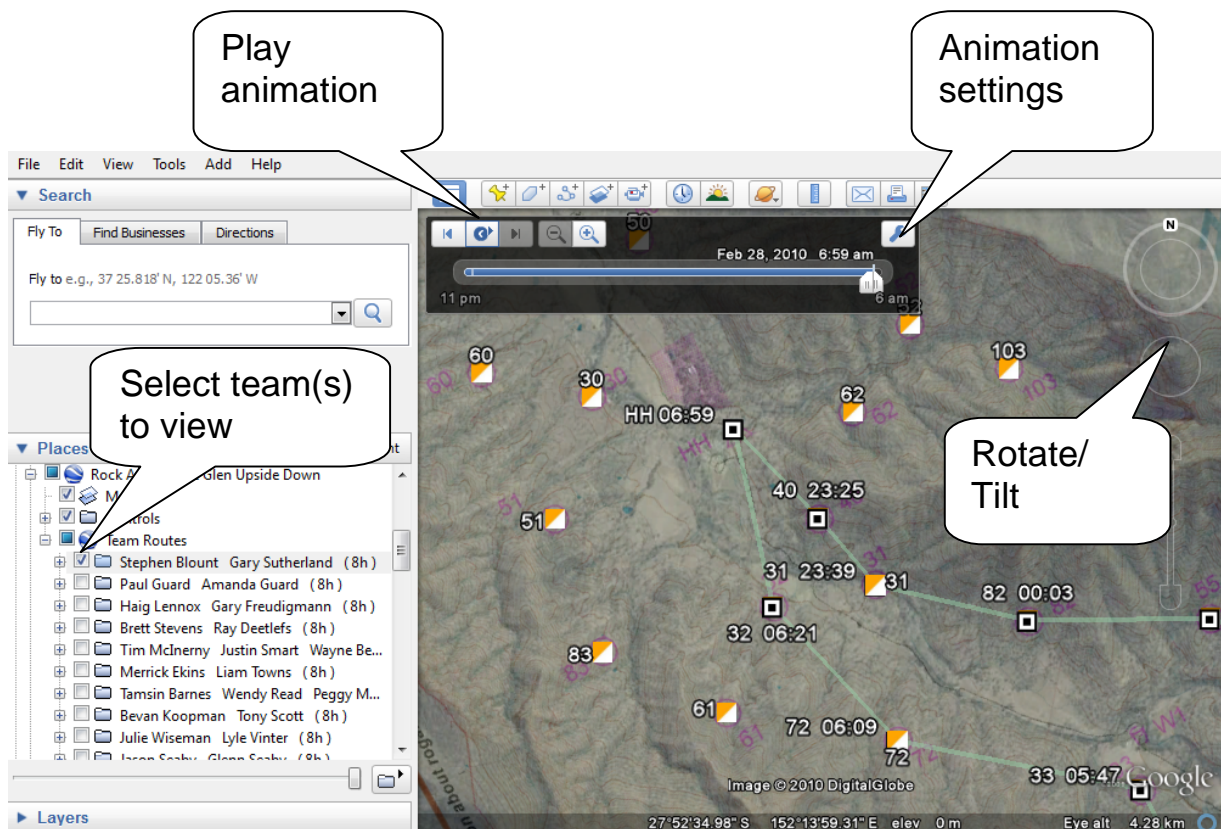
## Viewing Rogaine Results in Google Earth

The Navlight system enables us to analyse Rogaine results in greater detail than ever before. When coupled with Google Earth it allows a very interesting presentation of team routes and splits.

The results in Google Earth include animations of the team routes (you can choose just your own team, or any combination of teams) and display of split times.

You can download Google Earth by visiting <http://earth.google.com> (it's free!). Once you have installed it on your computer, download the "KMZ" file provided on the Results page of the QRA website and open it in Google Earth.

The Google Earth window should look something like this:



Note that you might need to edit the animation settings to slow down the playback and correct the time datum (display time in Coordinated Universal Time).

Enjoy!