

The Queensland Rogaine Association Presents



The DIAPER CREEK ROGAINE



6 and 12 Hour Rogaine - 6th September 2014

Organisation and Course setting by Paul Frylink and Tim McIntyre

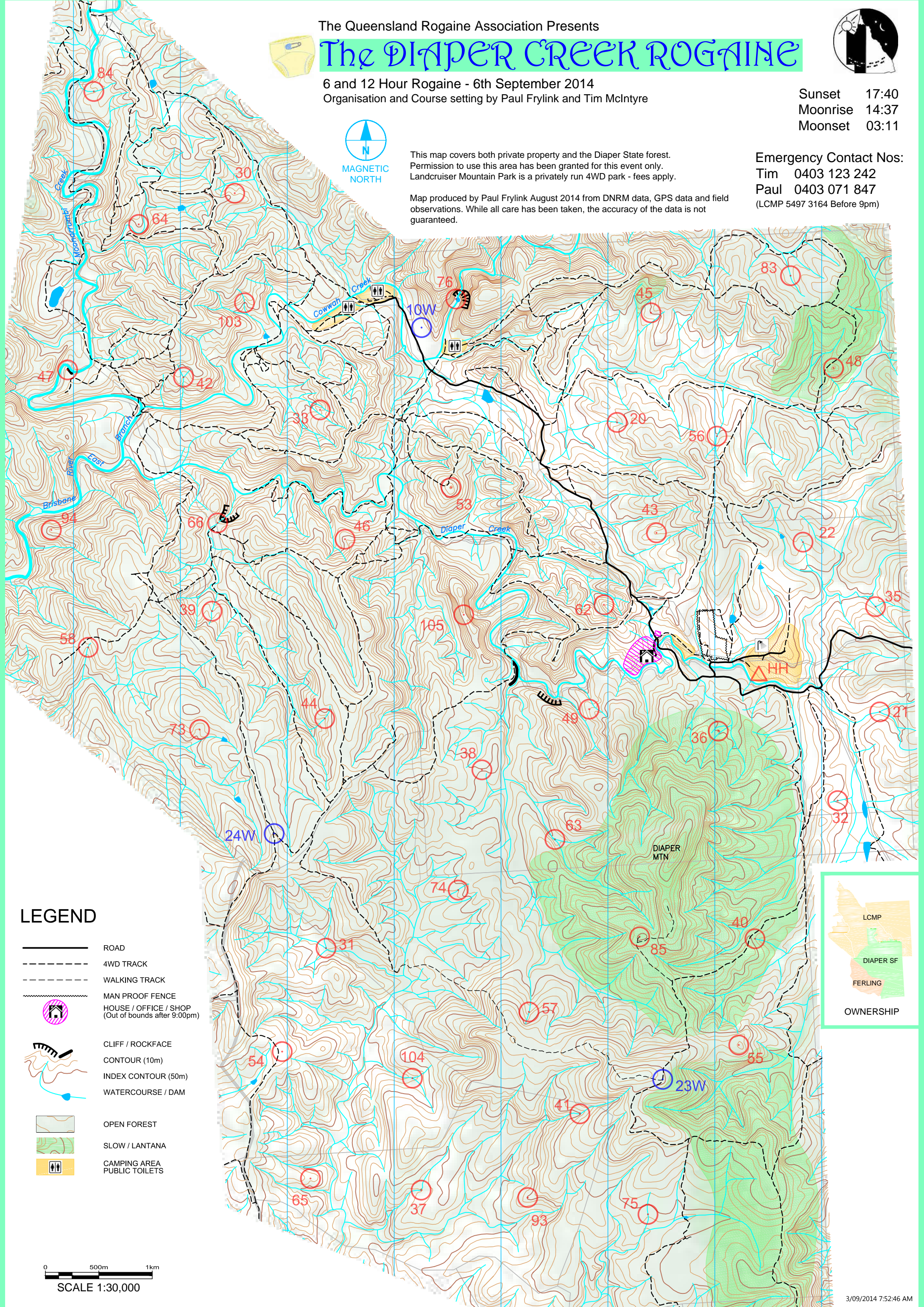
Sunset 17:40
Moonrise 14:37
Moonset 03:11



This map covers both private property and the Diaper State forest. Permission to use this area has been granted for this event only. Landcruiser Mountain Park is a privately run 4WD park - fees apply.

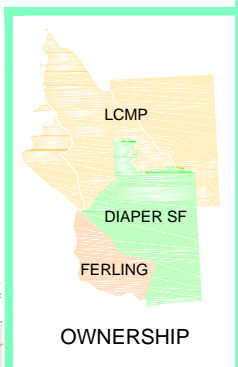
Map produced by Paul Frylink August 2014 from DNRM data, GPS data and field observations. While all care has been taken, the accuracy of the data is not guaranteed.

Emergency Contact Nos:
Tim 0403 123 242
Paul 0403 071 847
(LCMP 5497 3164 Before 9pm)



LEGEND

- ROAD
- 4WD TRACK
- WALKING TRACK
- MAN PROOF FENCE
- HOUSE / OFFICE / SHOP
(Out of bounds after 9:00pm)
- CLIFF / ROCKFACE
- CONTOUR (10m)
- INDEX CONTOUR (50m)
- WATERCOURSE / DAM
- OPEN FOREST
- SLOW / LANTANA
- CAMPING AREA
PUBLIC TOILETS



0 500m 1km
SCALE 1:30,000