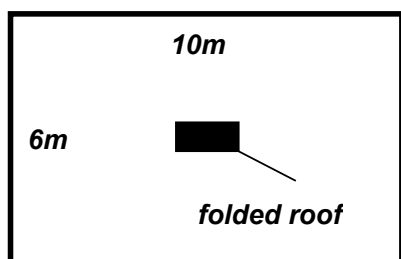


Queensland Rogaine Association

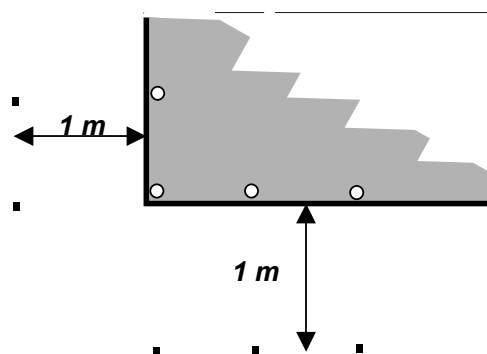
Hash House Marquee set-up instructions

The set-up area must be at least ten metres long by six metres wide, reasonably flat and cleared of rocks, sticks, suckers, etc.

Lay the folded roof down in the centre of the area – refer Sketch 1. Unfold widthwise, then lengthwise with the top facing up.



Sketch 1



Sketch 2

Once the roof is laid out flat, drive two 18" pegs at each corner hole and one at each side hole, 1 metre from the hole and perpendicular to the roof – refer Sketch 2. Leave room between the pegs and the ground to hook the springs onto the pegs.

Place one guy rope near each peg, hooking the spring onto the peg. Extend the 7' poles to wall height and place one at each hole. Starting at one corner, raise one end of the roof, loosely tensioning the guy ropes. Then raise the other end. Complete the side, assemble and raise the centre poles.

Align all poles to vertical, drive all the pegs fully and tension the guys.

Drive a 12" peg near each centre pole at 45°. Attach and tension each tie rope hanging from the roof to the peg below it.

Lay each folded wall at its end of the marquee (refer to photos). Unfold the wall onto the ground so the top 'Velcro' strip will be facing outwards when the wall is raised. Feed the wall between the ropes and the poles, starting at one corner, so the ends of the wall are near the third pole from the corners – refer to photos.

Align the chalk marks on the wall, below the top 'Velcro' strip, with each pole and connect the top 'Velcro' strip with its matching 'Velcro' strip inside the roof, starting at one end of the wall. Then connect the 'Velcro' loops around the poles. Repeat with the other wall. The bottoms of the walls can be secured in strong winds and/or rain with the 12" pegs.

The awning, above the four front windows, can be either rolled up under the guy ropes or set up, using the remaining 7' poles, 18" pegs and guy ropes, in which case the top of the guy ropes fed through slots at the top of the awning.

The two doors are first attached to the 'Velcro' strip, under the roof, the zipped down to secure. The doors can be removed for ventilation.

To pull down and pack up, follow the above instructions in reverse and ensure that all items are packed in their respective bags.

The roof is folded lengthwise corners to centre then over again to centre; widthwise, start at one end with app. 300mm and fold one way to the centre, then the other end the same way. The folded roof should fit snugly in its bag.

The walls are folded by first laying down outside up, then folding the top over to 4" (100 mm) above the top of the mud flap which is then folded over. Then start at one end with app. 300 mm and fold to the centre, then the other end the same way. The folded walls should fit snugly in their bag, along with the folded walls.

