



RAGING BULL

Upside Down Rogaine

Old Hidden Vale

Scale - 1:25000

contours: 10 metres

metres
0 250 500 750 1000

1 kilometre

Mag North

- contours
- index contour
- watercourse; dam
- Out-of-Bounds
- road
- major track
- light cover
- heavy cover
- windmill

- start/finish
- 33 control & n°
- WP water point

Organiser:

Gavin Bliesner

Course setters:

Gavin Bliesner

Mike Costello

Vetters:

Trevor Sauer

Meredith Sauer

John Raymond

Map compiled by

John Raymond

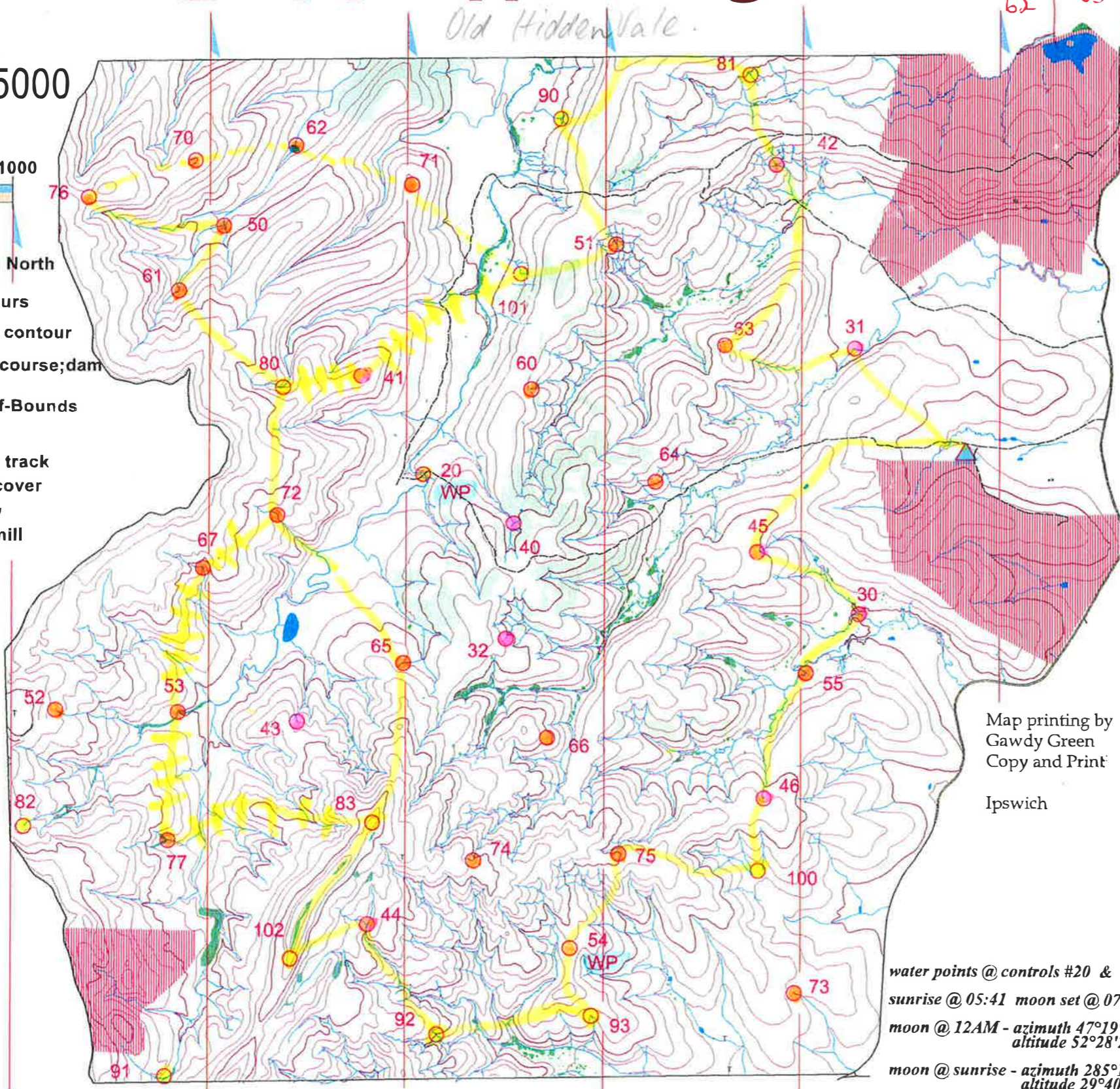
QRA Ocad Licence 3901

February 2005

Base map by

Eric Andrews for QOA

This land is private property. Possession of map does not confer permission to enter



31
63
42
81
90
51
101
71
62

70
76
50
61
80
72
65
83

102
44
92
93
54
75
100
46
55

26/27 Feb 2005

CONTROL LIST

N°	FEATURE	LOCATION	VALUE
20	the road crossing *WP*	45 metres @ 330°	20
30	the watercourse junction		30
31	the watercourse	the bend	30
32	the watercourse	head of	30
40	the watercourse junction		40
41	a knoll		40
42	the watercourse junction		40
43	the watercourse	head of	40
44	the watercourse junction		40
45	the watercourse	head of	40
46	the watercourse	head of	40
50	the watercourse junction		50
51	the watercourse junction		50
52	the watercourse	head of	50
53	the watercourse	the bend	50
54	the ridge *WP*		50
55	the watercourse	the bend	50
60	the watercourse	head of	60
61	the watercourse	the bend	60
62	the dam wall	foot of	60
63	the ridge		60
64	the ridge	middle part	60
65	the watercourse	the bend	60
66	a knoll		60
67	the watercourse	the bend	60
70	the knoll		70
71	the ridge		70
72	the watercourse	the bend	70
73	the watercourse	head of	70
74	the watercourse	the bend	70
75	the ridge		70
76	the saddle		70
77	the watercourse junction		70
80	the watercourse	the bend	80
81	the watercourse junction		80
82	the watercourse	head of	80
83	the knoll		80
90	the watercourse junction		90
91	the watercourse junction	BTM shelters	90
92	the watercourse	upper part	90
93	the watercourse	head of	90
100	the ridge - end of	40 metres @ 174°	100
101	the watercourse	the bend	100
102	the ridge		100

for future events, check the website : www.qldrogaine.asn.au

Map printing by
Gawdy Green
Copy and Print

Ipswich

water points @ controls #20 & #54
sunrise @ 05:41 moon set @ 07:10
moon @ 12AM - azimuth 47°19'54"
altitude 52°28'23"
moon @ sunrise - azimuth 285°12'47"
altitude 29°40'01"