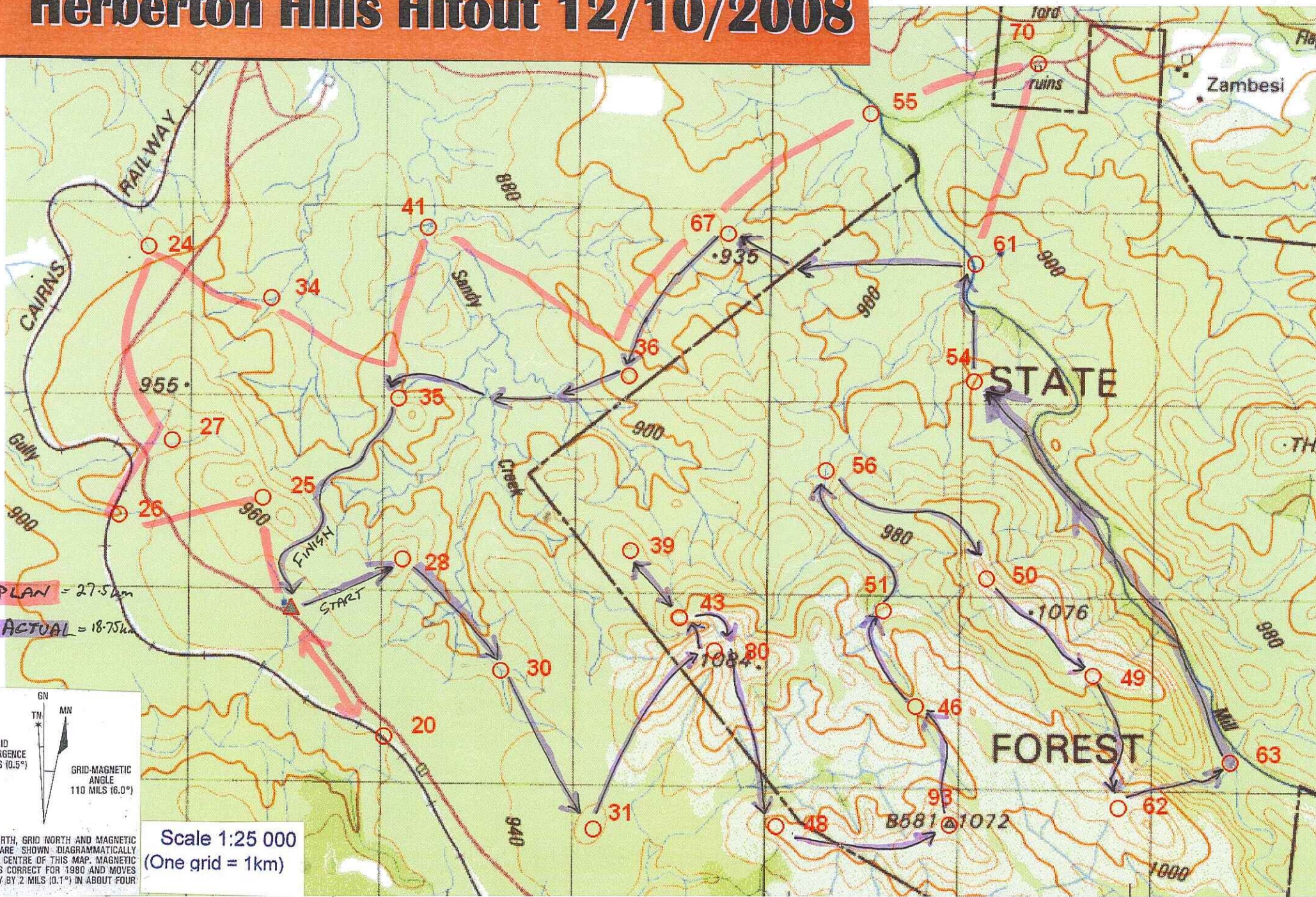
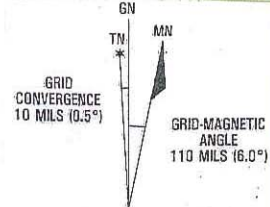


Herberton Hills Hitout 12/10/2008



PLAN = 27.5km
 ACTUAL = 18.75km



Scale 1:25 000
 (One grid = 1km)

TRUE NORTH, GRID NORTH AND MAGNETIC NORTH ARE SHOWN DIAGRAMMATICALLY FOR THE CENTRE OF THIS MAP. MAGNETIC NORTH IS CORRECT FOR 1990 AND MOVES EASTERLY BY 2 MILS (0.1°) IN ABOUT FOUR YEARS.

TEAM SMART DINGO'S - PETER WEST + ADAM FLETCHER 940 PTS 5URS 53.25 APPROX 18.75km = 3.2km/hr