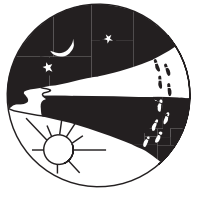


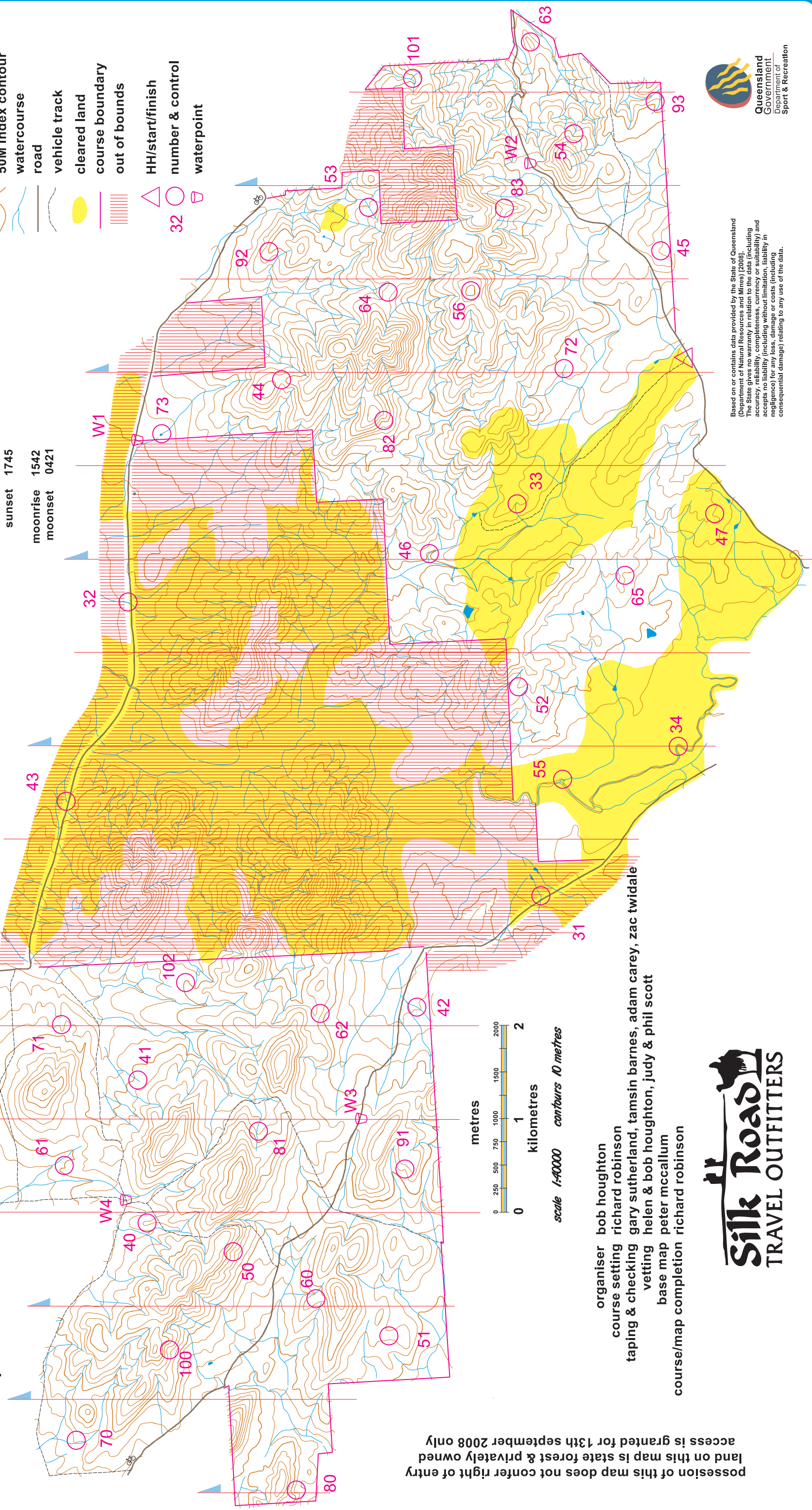
for further information about rogaining, go to the website:
www.qldrogaine.asn.au



The Gammie Leg Rogaine

September 13th 2008

Magnetic North



- contours
- 50M index contour
- watercourse
- road
- vehicle track
- cleared land
- course boundary
- out of bounds
- HH/start/finish
- number & control
- waterpoint

sunset 1745
 moonrise 1542
 moonset 0421

possession of this map does not confer right of entry
 land on this map is state forest & privately owned
 access is granted for 13th september 2008 only

organiser bob houghton
 course setting richard robinson
 taping & checking gary sutherland, tamsin barnes, adam carey, zac twidale
 vetting helen & bob houghton, judy & phil scott
 base map peter mccallum
 course/map completion richard robinson

Silk Roads
 TRAVEL OUTFITTERS

Based on or contains data provided by the State of Queensland
 (Department of Natural Resources and Mines) [2008].
 The State gives no warranty in relation to the data (including
 accuracy, reliability, completeness, currency or suitability) and
 accepts no liability (including without limitation, liability in
 negligence) for any loss, damage or costs (including
 consequential damage) relating to any use of the data.

