

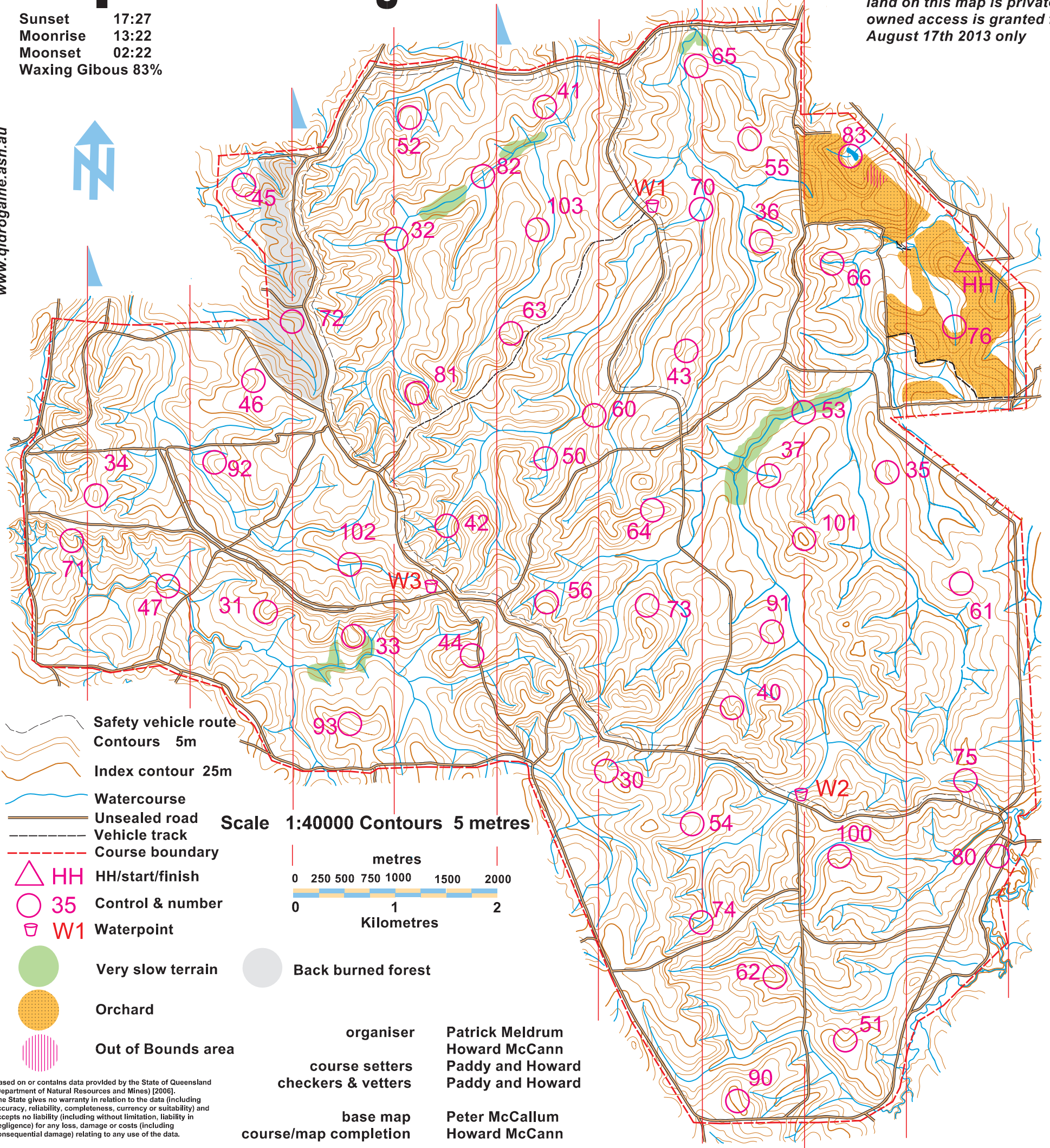
Bauple 0 Bill Rogaine

August 17th 2013

possession of this map does not confer right of entry all land on this map is privately owned access is granted for August 17th 2013 only

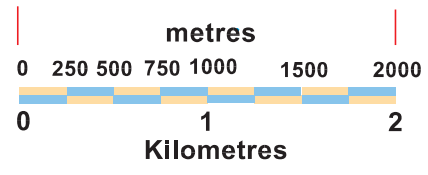
for further information about rogaining, go to the website:
www.qldrogaine.asn.au

Sunset 17:27
Moonrise 13:22
Moonset 02:22
Waxing Gibous 83%



- Safety vehicle route
- Contours 5m
- Index contour 25m
- Watercourse
- Unsealed road
- Vehicle track
- Course boundary
- HH HH/start/finish
- 35 Control & number
- W1 Waterpoint
- Very slow terrain
- Back burned forest
- Orchard
- Out of Bounds area

Scale 1:40000 Contours 5 metres



organiser Patrick Meldrum
Howard McCann
course setters Paddy and Howard
checkers & veters Paddy and Howard
base map Peter McCallum
course/map completion Howard McCann

Based on or contains data provided by the State of Queensland (Department of Natural Resources and Mines) [2006]. The State gives no warranty in relation to the data (including accuracy, reliability, completeness, currency or suitability) and accepts no liability (including without limitation, liability in negligence) for any loss, damage or costs (including consequential damage) relating to any use of the data.

Check Point Descriptions

30 Saddle	50 10m W of Creek Junction	70 Creek Junction	90 High Point
31 Spur	51 Gully	71 Spur	91 Gully /Large Tree
32 Creek Junction	52 Spur	72 Gully	92 Spur
33 Knoll	53 Creek Junction	73 Gully	93 Shelter
34 Knoll	54 Broad Spur	74 Creek Junction	
35 High Point / Large Tree	55 High Point	75 Creek line	100 Gully
36 Spur	56 Spur	76 Creek line	101 High Point
37 Creekline			102 Creek Junction / Billabong
	60 Saddle	80 25m W Track Bend	103 Spur
40 Gully	61 Saddle	81 Spur	
41 Gully	62 Spur	82 Old Bridge	W1 Track Junction 15m NE
42 Creek Junction	63 Gully	83 SW of Dam	W2 Track Junction NE Side
43 Saddle	64 Spur		W3 Track Junction 15m NW
44 50m W of Track	65 Spur		
45 Spur	66 Gully		
46 Gully			
47 Creek Junction			

Safety Response: Go to the nearest track and make your way to either the Hash House or nearest water point.
In the event of an EMERGENCY CALL 000 then HQ
if you need assistance call Howard 0413 815 614
Paddy 0432 799 528

Total Points= 2900