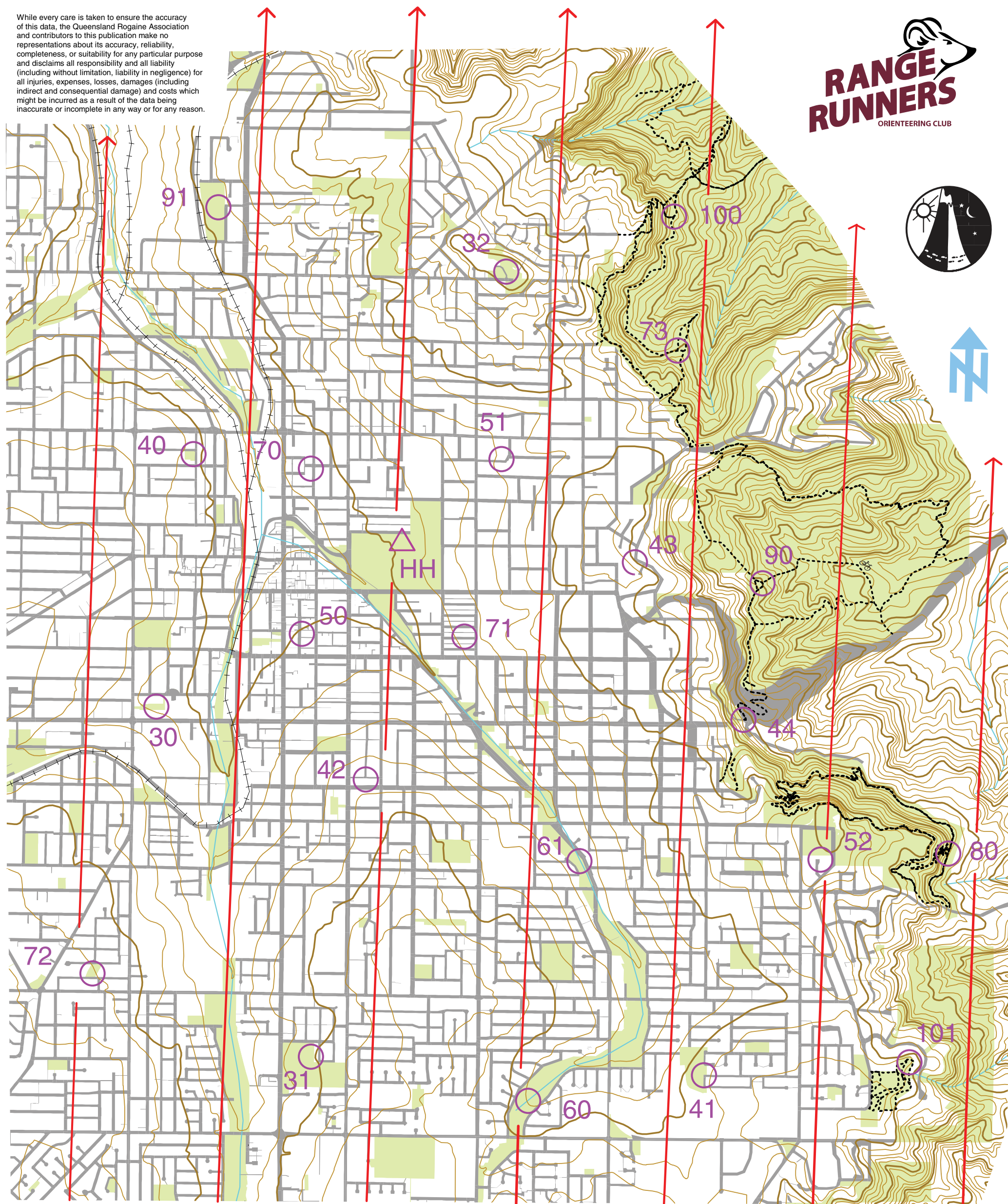
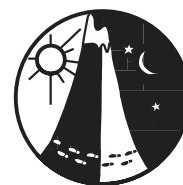


While every care is taken to ensure the accuracy of this data, the Queensland Rogaine Association and contributors to this publication make no representations about its accuracy, reliability, completeness, or suitability for any particular purpose and disclaims all responsibility and all liability (including without limitation, liability in negligence) for all injuries, expenses, losses, damages (including indirect and consequential damage) and costs which might be incurred as a result of the data being inaccurate or incomplete in any way or for any reason.



Scale 1 : 25000

Contour Interval 10 metres  
(indexed at 50 metres)

Emergency Contact:  
Richard Robinson 0407 880 681

Organisation, Land Liason  
and Course Setting: Richard Robinson

Vetter: Tamsin Barnes

Map: Peter McCallum

## LEGEND

△ HH Hash house, Start / finish

○ 36 Checkpoint / number

— Road Reserve

— Walkway

— Waterway

+++++ Railway

— Park / Remnant Vegetation

— Contour

— Index Contour

----- Walking Track or Bridal Track

# Stairway to Heaven Metrogaine