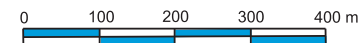


orienteering map of Mt Crosby

1:10000 5m contours



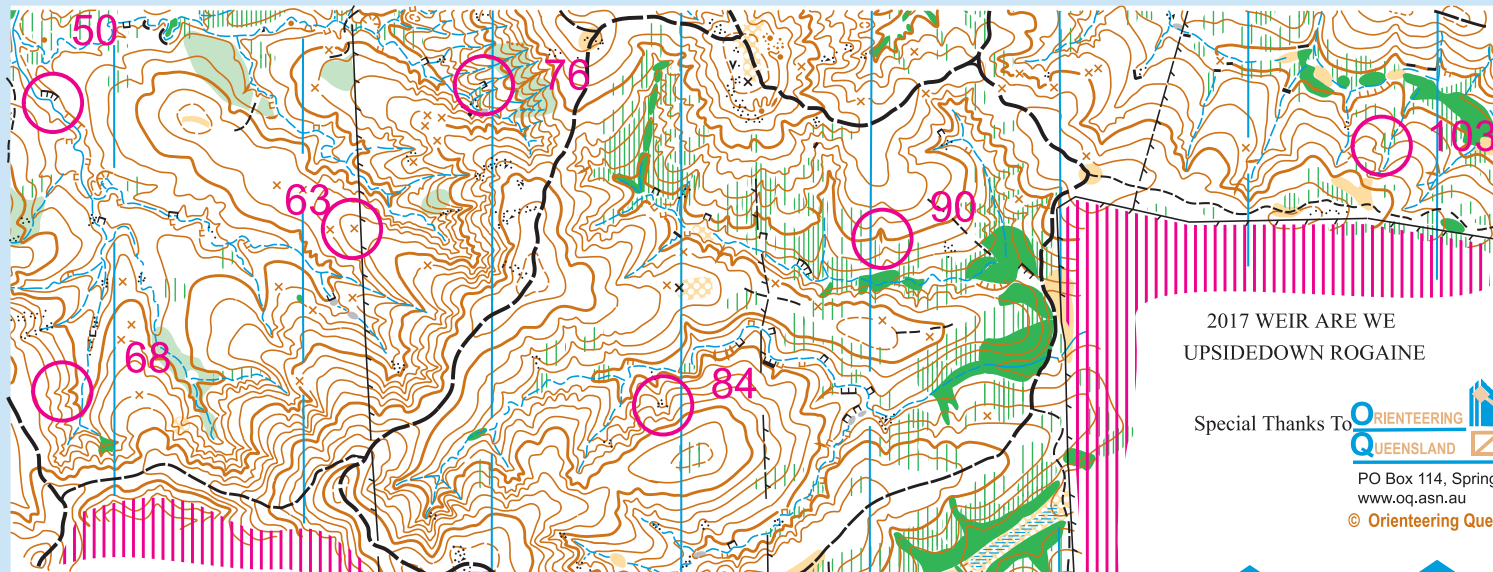
2017 WEIR ARE WE
UPSIDEDOWN ROGAINE

Special Thanks To



PO Box 114, Spring Hill 4004
www.oq.asn.au

© Orienteering Queensland, June 2009



steep slope not mapped

- | | | | |
|--|---------------------|--|--|
| | Minor road | | Contour |
| | Vehicle track | | Index contour |
| | Large footpath | | Form line |
| | Small footpath | | Knoll |
| | Indistinct footpath | | Small knoll |
| | Narrow ride | | Depression |
| | Powerline | | Small depression |
| | High fence | | Pit, termite mound |
| | Fence | | Gully or trench |
| | Ruined fence | | Small gully or trench |
| | Pipeline | | Earth bank |
| | Building | | Broken ground |
| | High tower | | |
| | Man made object | | |
| | Impassable cliff | | Open |
| | Passable rock face | | Open with scattered trees |
| | Rock pillar | | Rough open |
| | Boulder | | Rough open with scattered trees |
| | Large boulder | | Forest - easy running |
| | Boulder area | | Forest - slow running |
| | Boulder group | | Undergrowth - slow running |
| | Rocky ground | | Forest - difficult to run |
| | Rocky pit | | Undergrowth - difficult to run |
| | Open sandy ground | | Vegetation - difficult to walk, impassable |
| | Bare rock | | Cultivated land |
| | | | Distinct vegetation boundary |
| | | | Indistinct vegetation boundary |

steep slope not mapped

Note: small patches of lantana are shown by undergrowth screens

Original survey1987
Updated Geoff Peck 2005
Cartography Geoff Peck 2005
Drawn using OCAD 8, ISOM 2000 symbol set

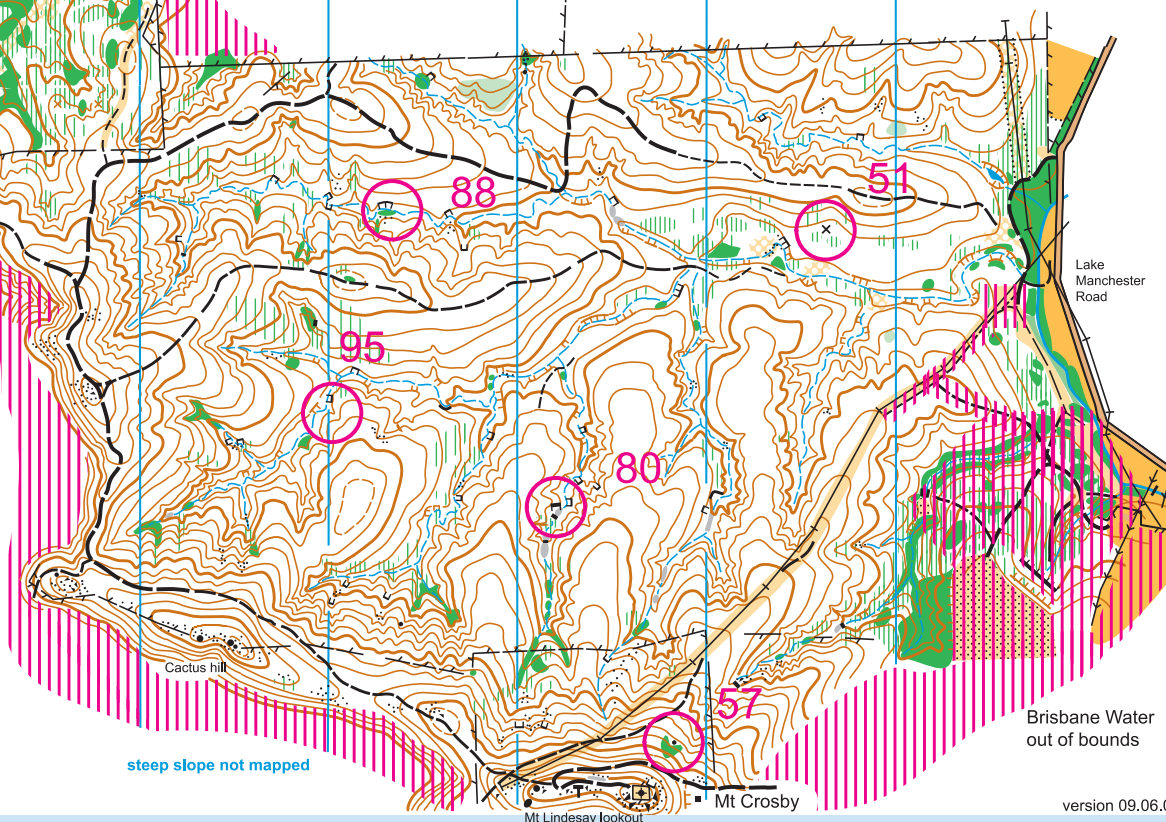
- | | |
|--|-----------------------------|
| | Crossable watercourse |
| | Crossable small watercourse |
| | Marsh |
| | Indistinct marsh |
| | Well, pond or tank |
| | Spring |

tracks, fences and vegetation updated 2009



Contours are for navigating, vegetation is for route choice

steep slope not mapped



Lake Manchester Road

Brisbane Water out of bounds

Mt Lindsay lookout

Mt Crosby

version 09.06.06