



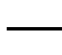
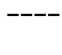


# Shaking the Tamborine

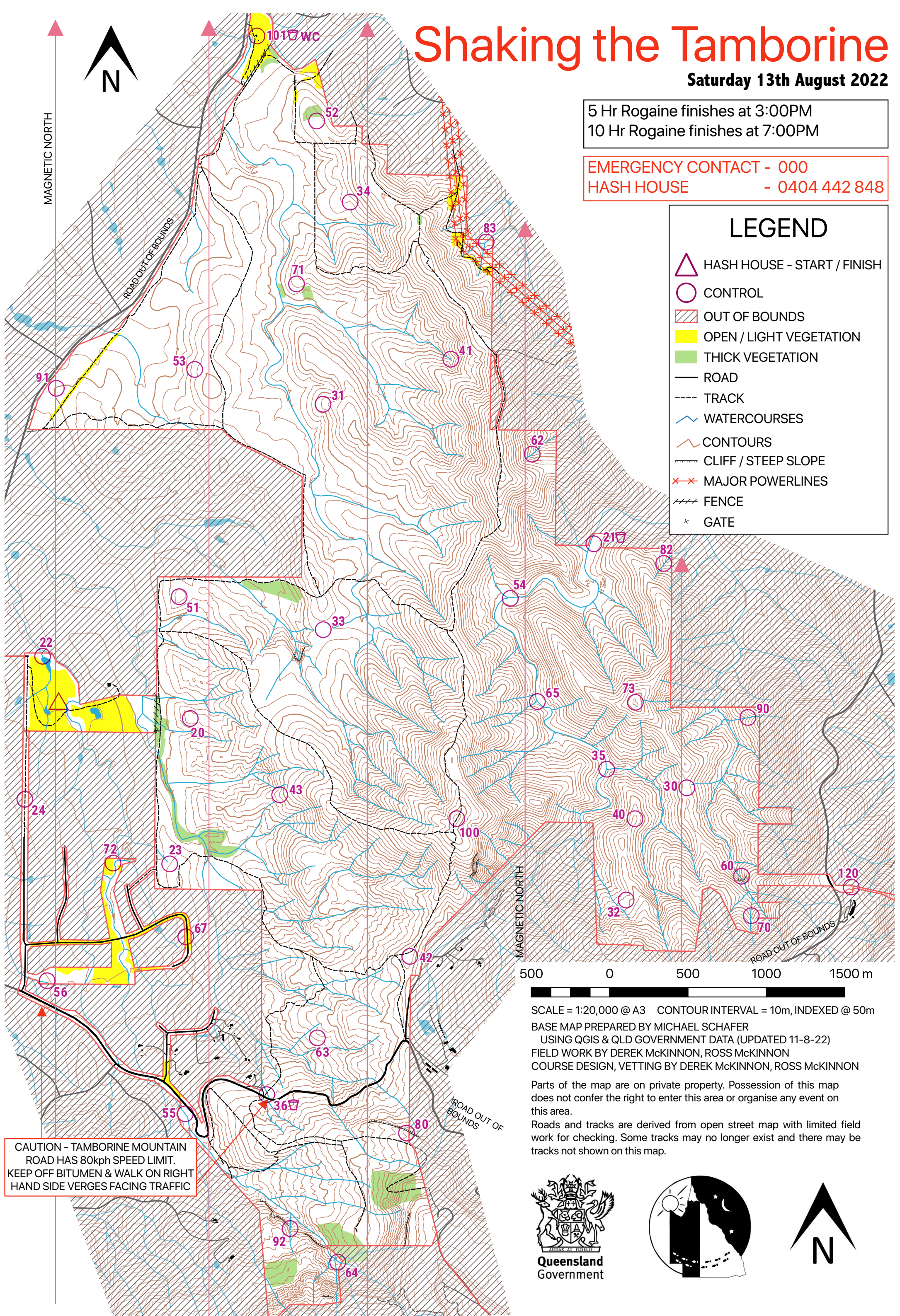
Saturday 13th August 2022

5 Hr Rogaine finishes at 3:00PM  
10 Hr Rogaine finishes at 7:00PM

EMERGENCY CONTACT - 000  
HASH HOUSE - 0404 442 848

## LEGEND

-  HASH HOUSE - START / FINISH
-  CONTROL
-  OUT OF BOUNDS
-  OPEN / LIGHT VEGETATION
-  THICK VEGETATION
-  ROAD
-  TRACK
-  WATERCOURSES
-  CONTOURS
-  CLIFF / STEEP SLOPE
-  MAJOR POWERLINES
-  FENCE
-  GATE



CAUTION - TAMBORINE MOUNTAIN  
ROAD HAS 80kph SPEED LIMIT.  
KEEP OFF BITUMEN & WALK ON RIGHT  
HAND SIDE VERGES FACING TRAFFIC

SCALE = 1:20,000 @ A3 CONTOUR INTERVAL = 10m, INDEXED @ 50m

BASE MAP PREPARED BY MICHAEL SCHAFER

USING QGIS & QLD GOVERNMENT DATA (UPDATED 11-8-22)

FIELD WORK BY DEREK McKINNON, ROSS McKINNON

COURSE DESIGN, VETTING BY DEREK McKINNON, ROSS McKINNON

Parts of the map are on private property. Possession of this map  
does not confer the right to enter this area or organise any event on  
this area.

Roads and tracks are derived from open street map with limited field  
work for checking. Some tracks may no longer exist and there may be  
tracks not shown on this map.

